

Installation of Flexible Hose Assemblies

In general hose assemblies should be handled with care to prevent excessive bending, twisting and kinking since this reduces the life of the hose assembly considerably. Particular attention must be given to preclude hoses from wear, snagging, kinking, bending smaller than minimum bend radius and cutting, any of which can cause premature hose failure. Large diameter hoses and very short hose assemblies are more prone to kinking. Special care must be taken to prevent twisting of hose assemblies that do not incorporate assembly fittings with spanner flats to counteract while the nut is turned to the connection fitting (e.g. Parker/Statoflex PTFE hose type 101). Twisting of the hose can be determined from the identification markings running along its length.

The flexible hose should be installed so that it will be subject to a minimum of flexing during operation.

Installation of PA Hose with Hoerbiger HS3AM Axial Plug

- 1 Install the plug-in screw into the adapter (e.g. firewall, brake) (see Figure 2, Sheet 2).
- 2 Simply insert the axial plug into the plug-in screw until it is snapped as outlined in Figure 2, Sheet 2.

Removal of PA Hose with Hoerbiger HS3AM Axial Plug

- 1 Screw out the plug-in screw together with the snapped axial plug (see Figure 2, Sheet 2).
- 2 Disconnect the plug-in screw from the axial plug by inserting a sleeve (7 x 30 x 0.5 mm) as outlined in Figure 2, Sheet 2.

Installation of PA Hose with Hoerbiger H31A Axial Plug

- 1 Install the plug coupling M into the adapter (e.g. firewall, brake) (see Figure 2, Sheet 2).
- 2 Insert the plug coupling W into plug coupling M until it is snapped as outlined in Figure 2, Sheet 2.

Removal of PA Hose with Hoerbiger H31A Axial Plug

- 1 Disconnect the plug coupling W from the plug coupling M by bending the clamps as outlined in Figure 2, Sheet 2.

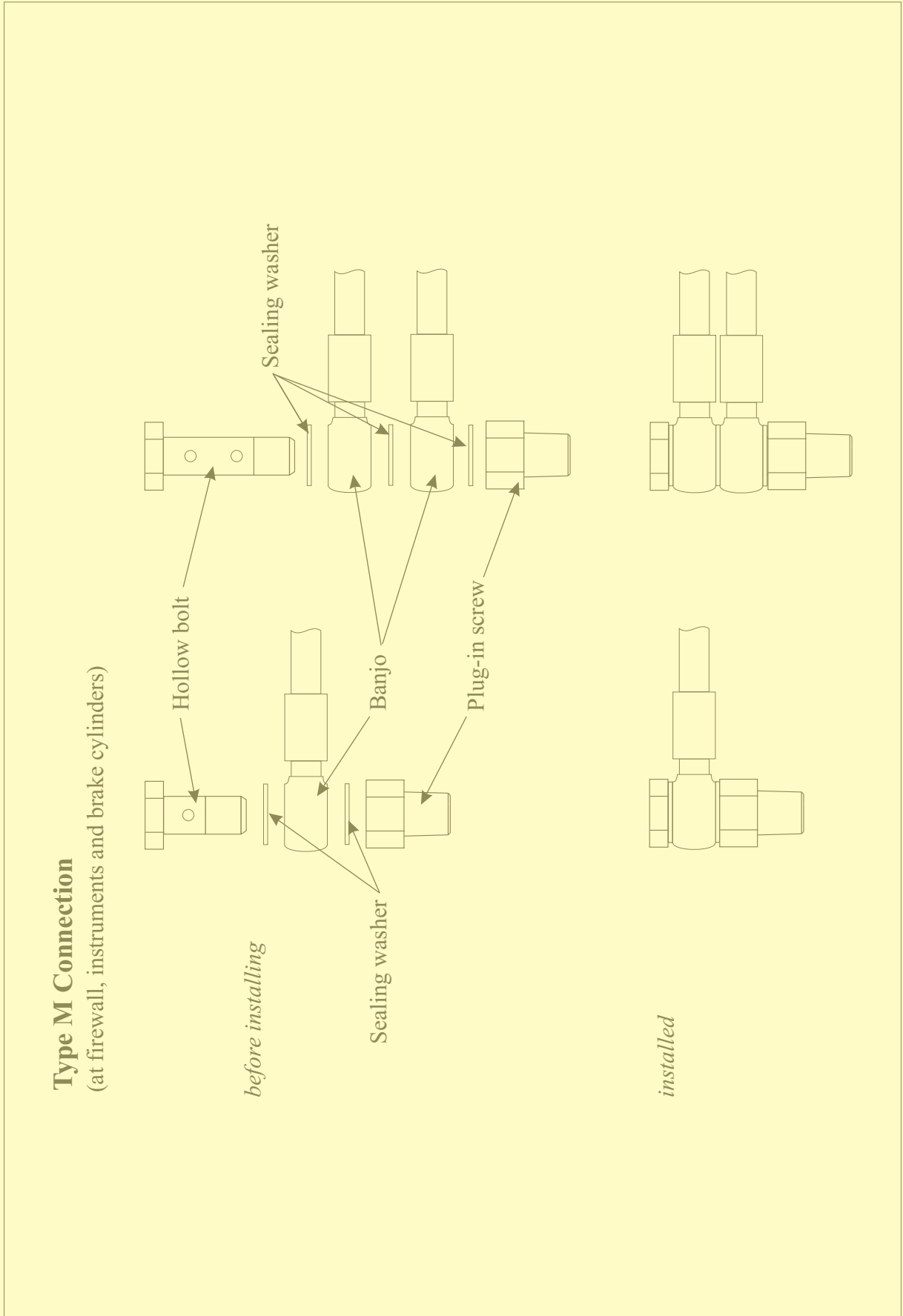


Figure 2, Sheet 1

Connection Types PA Hoses

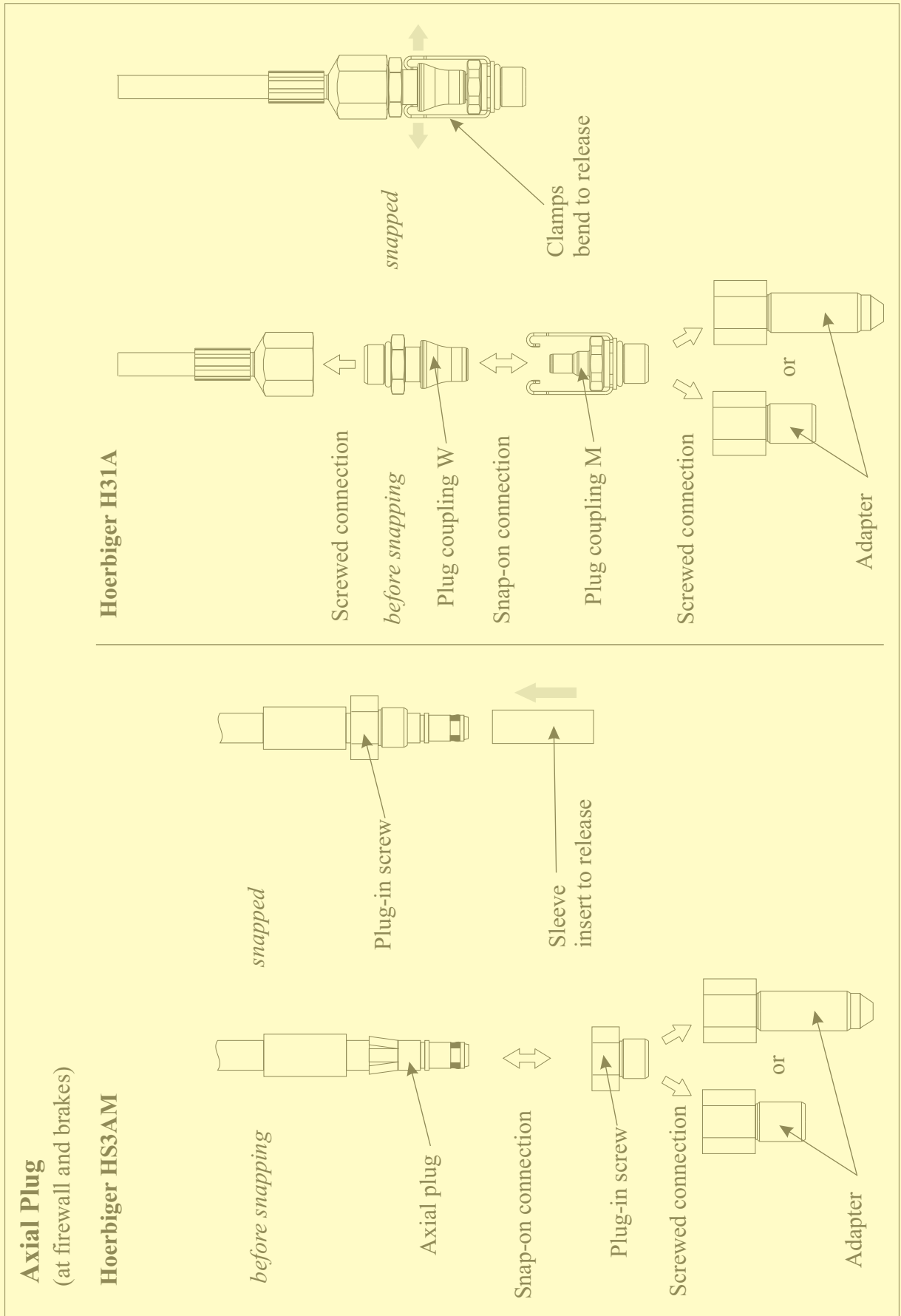


Figure 2, Sheet 2

Connection Types PA Hoses